

# DERMALOG

## Smart Verification Terminal 4500

Rugged multi-modal biometric handheld



### The ultimate device for:

- > ID issuance and checks
- > Voter verification (elections)
- > SIM card registration
- > Bank KYC
- > Access control
- > Visitor management

### Key Benefits

The SVT 4500 is DERMALOG's multi-modal biometric handheld device featuring a rugged design for versatile use in the field.

# DERMALOG SVT 4500

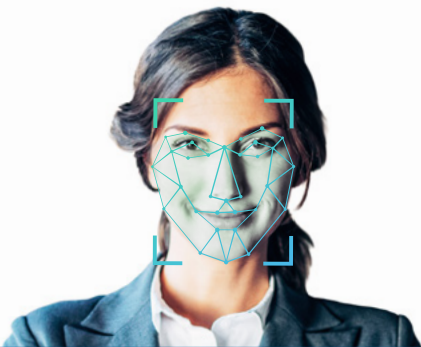
## Secure identification in any conditions.

DERMALOG's Smart Verification Terminal 4500 (SVT 4500) is an exceptionally rugged, high-performance, portable and multi-connectable handheld. It combines on-device and server-based identification, including different wireless communication standards (Bluetooth/WIFI/GPS/NFC) to enable the future of mobile biometrics.



### Fingerprint Recognition

The SVT 4500's integrated fingerprint scanner provides high-quality images (500 dpi) and is certified by the Federal Bureau of Investigation (FBI PIV). The device also features field-proven DERMALOG liveness detection that reliably prevents presentation attacks.



### Face Recognition

The SVT 4500 features a 13-MP rear camera that captures high-quality facial images for 1:1 and 1:N matching. Combined with DERMALOG's high-performance Automated Biometric Identification System (ABIS), the SVT 4500 can also be used for multi-factor identification.



### Iris Recognition

As a multi-modal biometric device, SVT 4500 enables iris identification in addition to fingerprint and facial recognition. DERMALOG's iris recognition is one of the most advanced solutions on the market and provides fast matching even with large databases.

## Outstanding Features

- > 500-dpi FBI certified fingerprint scanner
- > 13-MP camera for face capturing
- > On-device and server-based identification
- > Contact and contactless card reader (NFC)
- > LTE, Wi-Fi and Bluetooth communication
- > Dust-tight, water- and drop-protected (IP65)
- > 10,000-mhA long-lasting battery



### Card Reader

SVT 4500 captures and reads various document types such as ID cards, passports and driver's licenses. The terminal features a contact and contactless (NFC) interface for fast and convenient document reading. SVT 4500 also easily captures machine-readable data such as barcodes.



### Wireless Interfaces

A stable connection is essential for most fields of application. To stay connected at all times, SVT 4500 includes 4G Full Band LTE, Wi-Fi 802.11 a/b/g/n/ac and Bluetooth 5.1. These communication interfaces ensure secure and fast data transfer across any location.



### Rugged Design

As an IP65 device, SVT 4500 is dust-tight and water-protected. Furthermore, the terminal is protected against drops from heights of up to 1.5 m and includes a scratch-resistant and sunlight-readable screen so that the SVT 4500 is ready for any field job.

# Specifications Smart Verification Terminal 4500

## Physical & Performance Characteristics

Dimensions (L x W x H)	229 x 93 x 50 mm
Weight	approx. 680 g
Display & Touch	5.5 inch, resolution 1080 x 1920, support multi-touch
Battery	3.8 V/10000 mAh, removable battery
Expansion Slot	1 micro SD card, 2 micro SIM card, 2 SAM card (optional)
Interfaces	1 Type-C, 1 audio jack
Audio	Speaker, microphone
Keypad	1 function key, 1 volume+ key, 1 volume- key, 1 power key
Sensors	Ambient light, gyroscope, accelerometer, compass
Power Supply	Fast charging supported
CPU	Octa-core, 1.8 GHz or above
OS	Android 9 or higher
Internal Memory	2 GB DDR, 16 GB eMMC 3 GB DDR, 64 GB eMMC (optional) 4 GB DDR, 64 GB eMMC (optional)
Expansion	Support up to 128 GB micro SD card
Operating Temperature	-10 °C to 50 °C
Storage Temperature	-25 °C to 60 °C
Humidity	5 % RH to 95 % RH, non-condensing
Durability	IP65 Sealing, 1.5 m (4.9 ft.) drop to concrete
Certification	CE, FCC, RoHS

## Data Capture

Fingerprint Scanner	FBI PIV/FBI Mobile ID FAP20 (Up to FAP30 & FAP45)
Front Camera (optional)	5 MP, fixed focus with dual flash
Rear Camera (optional)	13 MP, auto focus with dual flash
Iris (optional)	Support
Barcode Scanner (optional)	1D/2D imager
Contactless Card Reader (optional)	ISO14443 TypeA/B, Mifare
Smart Card Reader (optional)	ISO7816
Secure Element (optional)	2 SAM slots, ISO7816

## Wireless Communications

WLAN	IEEE 802.11 a/b/g/n/ac
WWAN	LTE-FDD / LTE-TDD / WCDMA / GSM
Bluetooth	Bluetooth 4.2 BLE
GNSS	GPS/A-GPS, GLONASS, BeiDou

### Head Office

DERMALOG Identification Systems GmbH  
Mittelweg 120  
20148 Hamburg  
Germany

### Berlin Office

DERMALOG Identification Systems GmbH  
Kronenstraße 1  
10117 Berlin  
Germany

### Dubai Office

DERMALOG FZE  
Business Center, Al Shmookh Building  
UAQ Free Trade Zone  
Umm Al Quwain, U.A.E.

### Malaysia Office

DERMALOG AFIS Asia Sdn Bhd  
8-4, 8<sup>th</sup> Floor, Bangunan Malaysia RE  
No. 17, Lorong Dungun  
Damansara Heights  
50490 Kuala Lumpur

### Philippines Branch Office

DERMALOG Identification Systems GmbH  
Regus Gateway Tower  
Level 5 - Gateway Tower,  
Gen. Roxas Avenue cor. Gen. Aguinaldo Avenue  
Araneta Center, Cubao, Quezon City 1109  
Philippines

### Singapore Office

DERMALOG Singapore Technical Services Pte. Ltd.  
Southbank  
883 North Bridge Road, #17-02  
198785 Singapore



© 2021 All content and images are owned by DERMALOG Identification Systems GmbH and are actively protected by copyright.